

How to Clean the Robot Sensors

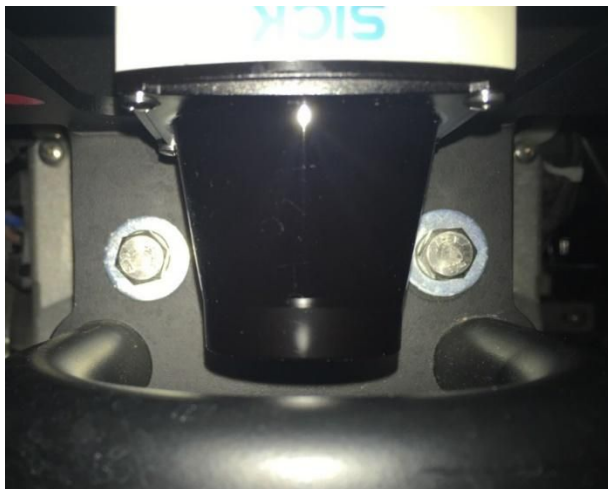
The most common sensor that needs to be cleaned is the Planar LIDAR that resides underneath the front of the scrubber unit. It is important to use a flashlight when inspecting that sensor so that it can be thoroughly cleaned.



DIRTY



CLEAN



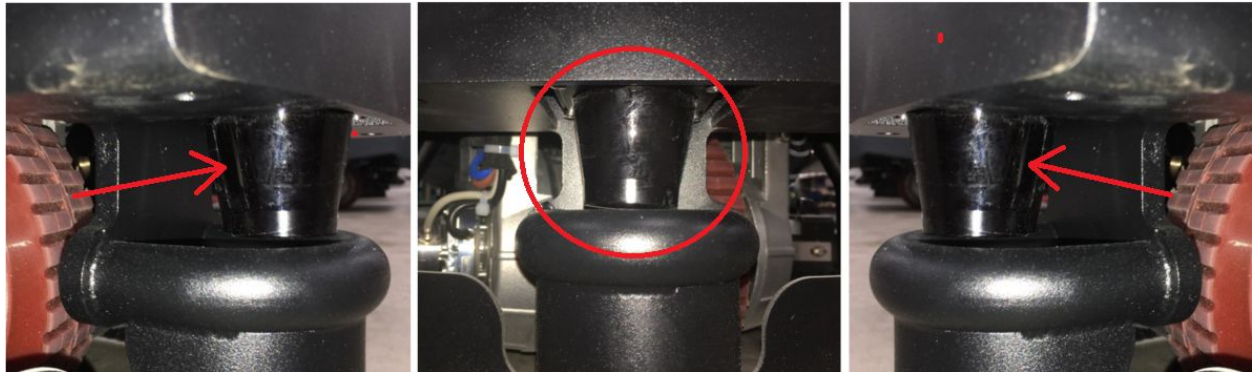
The robot sensors and cameras need to be wiped down before every autonomous run. Use a microfiber cloth (and cleaning solution if necessary) to clean all sensor surfaces.

There are a total of nine cameras.



Be sure to clean the front of the bottom Planar LIDAR sensor as well as all the way around both sides. Use a flashlight to carefully inspect

the entire surface. Any debris, streaks or surface light obstruction may deliver false environmental information to the robot.



Left Side

Middle

Right Side



